

The Brout Englert Lemaître Center at the Tournay-Solvay Castle

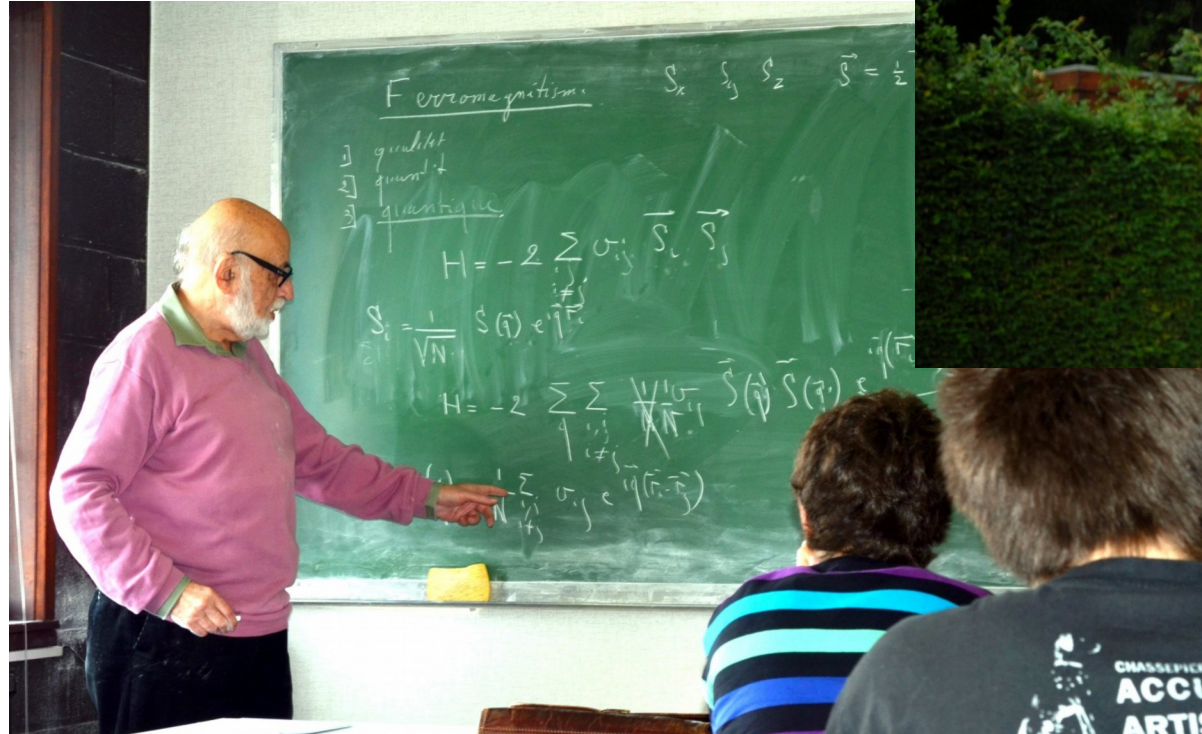


Theory of the Fundamental Interactions:

A long and brilliant history in Belgium,
and the history of collaboration across institutions.

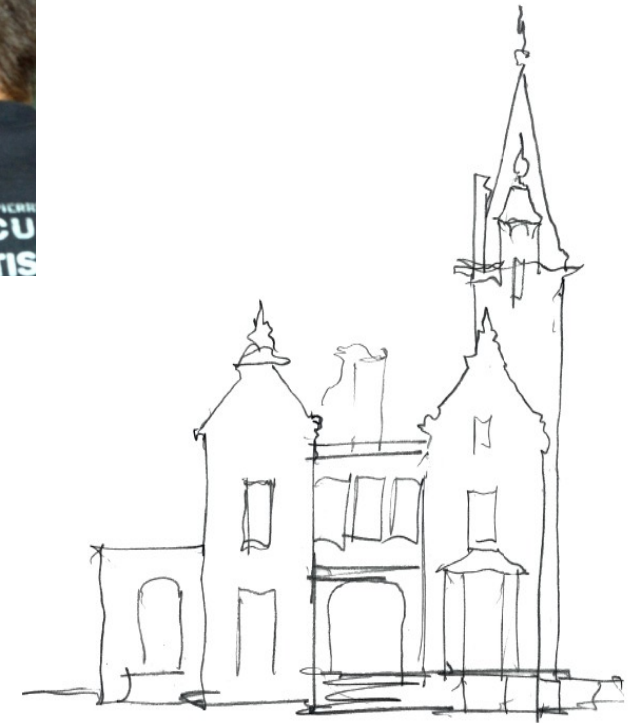


Did it start with these gentlemen:

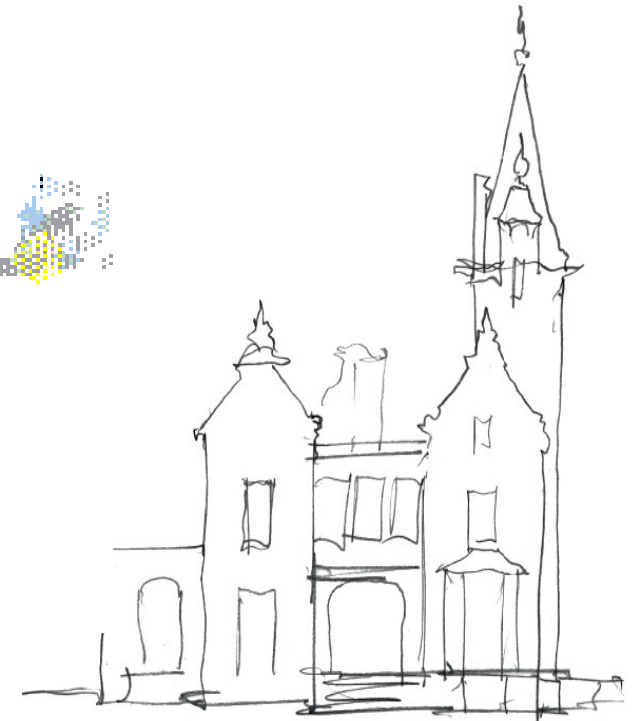
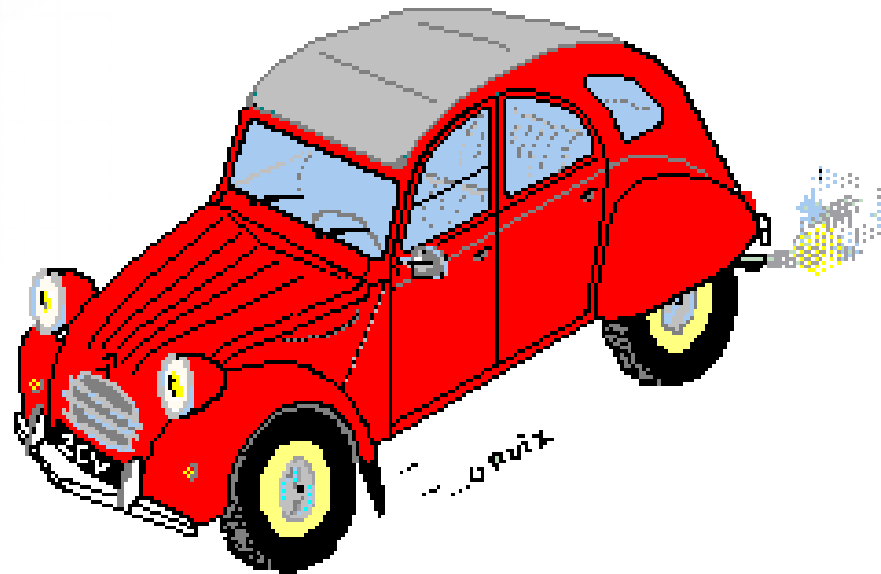
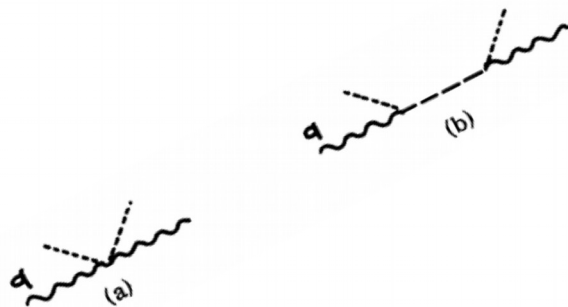
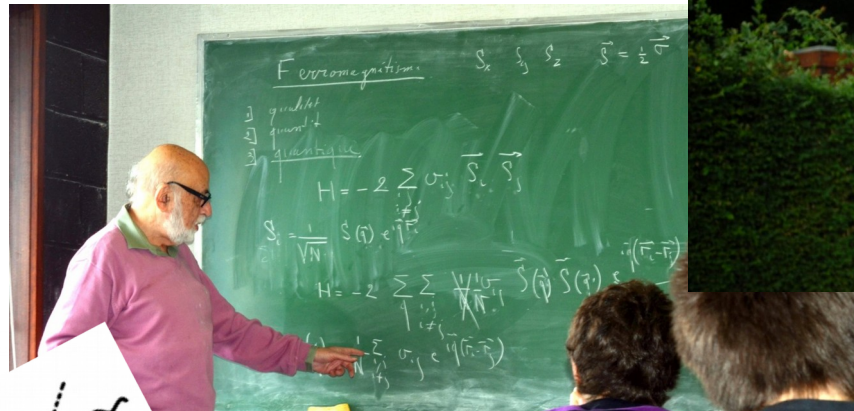


Picture credits : Katherine Graham, JM Frere

Robert Brout and François Englert



Did it start with these gentlemen:



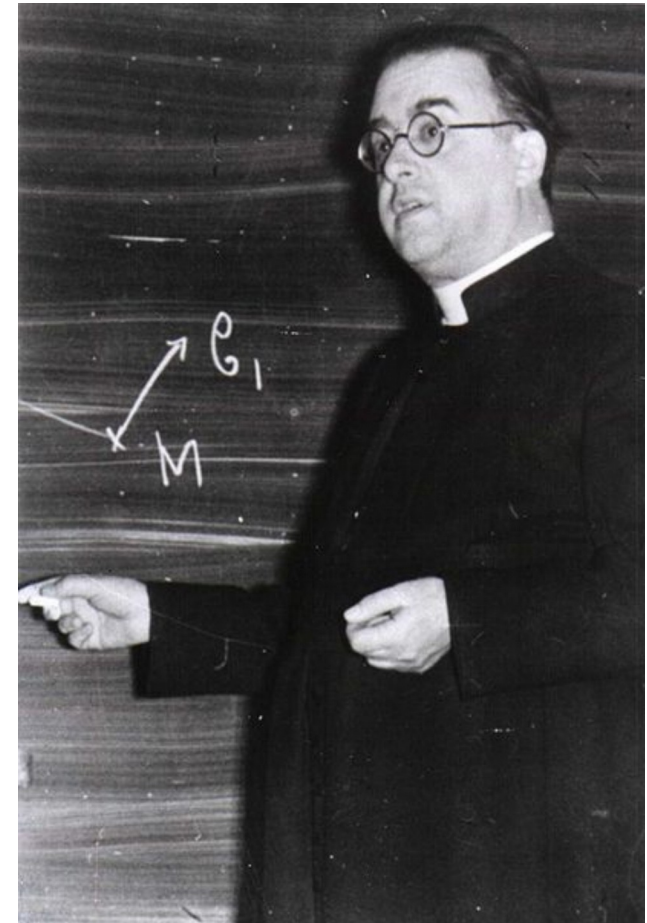
And some perilous trips
to Heverlee and Louvain-la-Neuve ?

In fact, a much older tradition,

Mgr Georges Lemaître,

a frequent visitor to ULB,
discussing with Rector-Astronomer Jacques Cox or
Théophile De Donder,

Welcomed the ULB students in Leuven during
World war II



Picture credit : KU Leuven

(Thks to Dominique Lambert for these precisions)





These collaborations were maintained and developed, notably through the Inter-University Attraction Poles (IAP) 2002-2017.

The following talks in this meeting will exemplify the depth and variety of the contributions.

Soon after the Nobel prize, the Senate heard François Englert's call to develop this collaboration to yet another level,

and voted a motion to create the Brout-Englert-Lemaître Center



(Thks to the hon. Senator Dominique Tilmans)

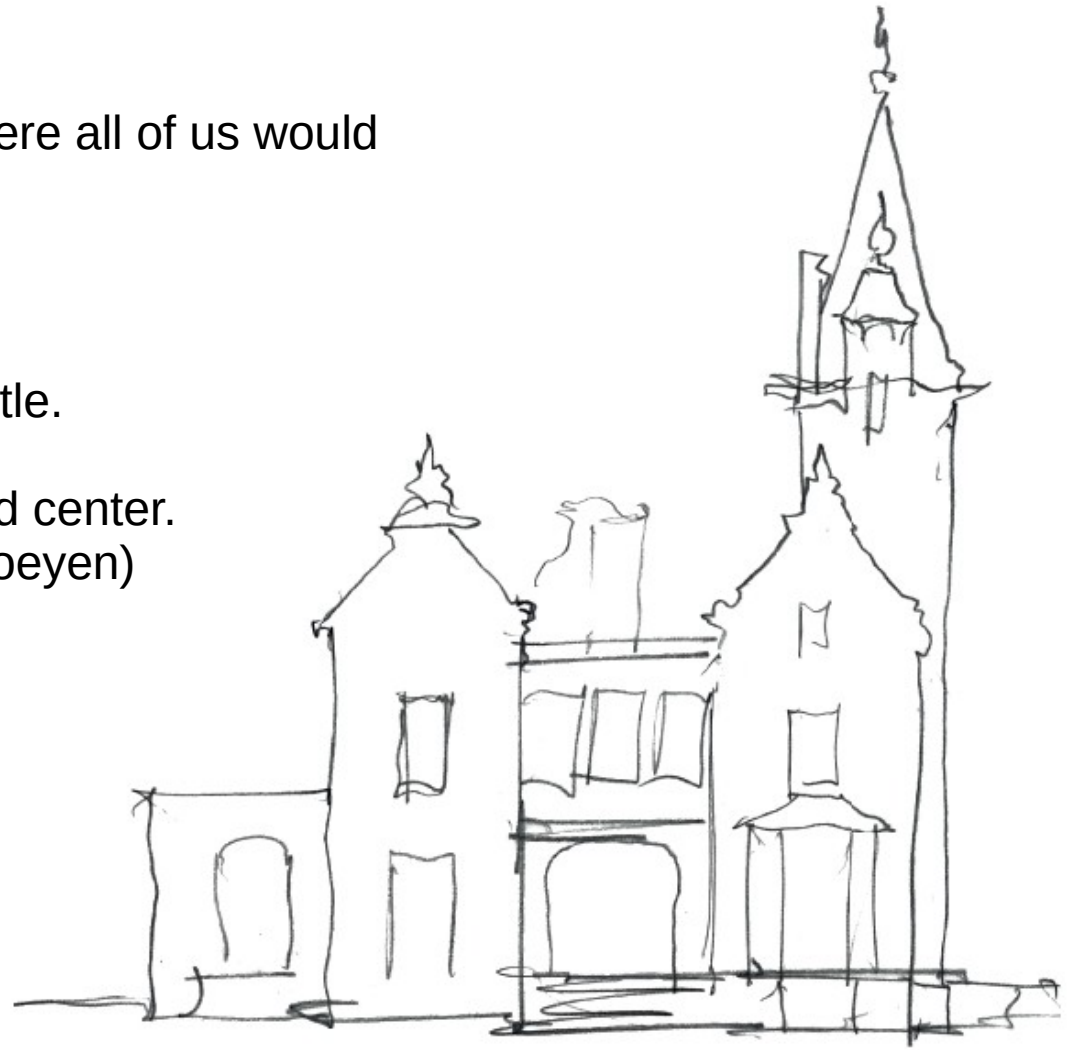


This initial program (a central institute where all of us would conduct our research) did not materialize,

but the Brussels region came to our help,

proposing to use the Tournay-Solvay castle.

This led to a new format for the projected center.
(see next presentation by Antoine Van Proeyen)



Not just for us, however : we will gladly share with this other tenant!
(a.k.a : The Night Shift)